



1

OUTSIDE LONDON

BAKEWELL CHATSWORTH HOUSE *Until 23 Oct. Mon-Sun 10.30-5.* Undertake your own Grand Tour of the Devonshire collection via a series of displays about 18th-century culture vultures. *Until 3 Jan*, direct Debo: Cecil Beaton's intimate photographs of the late Dowager Duchess (Wol March 2016).

BATH VICTORIA ART GALLERY *11 June-4 Sept. Mon-Sun 10.30-5.* Rooms of their own: re-creations of long-lost Bloomsbury interiors and decorative schemes, using objects and paintings from public and private collections.

BURFORD ASTHALL MANOR *12 June-10 July. Wed, Fri-Sun 12-6, Thurs 12-9.* Hundreds of stone sculptures are installed in the gardens and across the water meadow to the banks of the Windrush. Arrive without a car to receive a free glass of cordial in the potting-shed café.

CAMBRIDGE MAXWELL CENTRE *Until 2 July. Sat 11-4.* The Kettle's Yard crew curates a show of art inspired by the physicist this new scientific-research building is named after.

COOKHAM STANLEY SPENCER GALLERY *Until 31 Oct. Mon-Sun 10.30-5.30.* There's a bumper crop of Spencer exhibitions this year, including huge shows in Wakefield and Australia. In his beloved Cookham, admire his extraordinarily skilful, almost electrically charged paintings of flowers, gardens and landscapes.

DITCHLING DITCHLING MUSEUM OF ART & CRAFT *Until 11 Sept. Tues-Sat 10.30-5, Sun, bank hols 11-5.* The story of Edward Johnston and his London Underground typeface, introduced 100 years ago and barely altered since.

EDINBURGH SCOTTISH NATIONAL GALLERY *25 June-2 Oct. Mon-Wed, Fri-Sun 10-5, Thurs 10-7.* Charles François Daubigny, neglected forerunner of the Impressionists, had a fondness for painting in the open air or on a studio boat – a great inspiration to Monet, Pissarro, Van Gogh and others, who were also much influenced by his 'unfinished' style and use of newfangled synthetic pigments.

GLASGOW TRAMWAY *10 June-24 July. Tues-Fri 12-5, Sat, Sun 12-6.* 'Turkey-red' fabric, exported from factories in West Dunbartonshire's Vale of Leven in the 19th century, is the starting point of a group show comparing textile and craft traditions in Scotland and India. *18 June-30 July*, a new Glasgow Museums collection of Indian art.

HASTINGS JERWOOD GALLERY *Until 6 July. Tues-Sun, bank hols 11-5.* From her early fishing paintings to later, abstract approaches to industrial landscape, Prunella Clough's work was at its most eloquent on peripheral or mundane subjects. *Until 9 Oct*, me, me, me: self-portraits (by Roger Hilton, Carel Weight, Anne Redpath) from the Ruth Borchard Collection.



7

LEDBURY TINSMITHS *18 June-10 July. Tues-Sat 10-5.* Roll up! Hannah Sunny Whaler's painted signs on mirror or board borrow their drop-shadowed lettering and ornaments from traditional fairground designs.

LEEDS ROYAL ARMOURIES MUSEUM *Until 2 Oct. Mon-Sun 10-5.* One hundred Anglo-Saxon sword-fittings from the Staffordshire Hoard. **STANLEY & AUDREY BURTON GALLERY** *Until 9 July. Mon 1-5, Tues-Sat 10-5.* Lyons made: sculptor Michael's monumental bronzes.

LIVERPOOL EDITIONS *24 June-23 July. Mon-Fri 10-5.50, Sat 11-4.* Mutual admiration on Twitter and a shared appreciation of primitive sculpture has led to this exhibition of heads, figures and paintings by Pauline Hughes, Naomi Munuo and Jo Sweeting.

TATE LIVERPOOL *Until 18 Sept. Mon-Sun 10-5.50.* Bacon's use of a barely-there architectural framing device in many of his iconic works. Could it relate to his early years as an interior designer (Wol June 2016)? *Plus*, 70 years of penetrating self-portraits by the late Austrian artist Maria Lassnig. *Plus*, Pop-py, peppy paintings by New Yorker Ella Kruglyanskaya.

OXFORD OXFORD CERAMICS GALLERY *11 June-9 July. Mon-Sat 10-5.30.* Lustware in vibrant colours by Cornwall-based Sutton Taylor.

SALFORD THE LOWRY *Until 17 July. Mon-Fri, Sun 11-5, Sat 10-5.* Katie Paterson's cosmic art: a recording of Beethoven's 'Moonlight' sonata bounced off the real moon via radio; a series of clocks that tell the time on other planets; and a new commission incorporating 10,000 images of solar eclipses.

FRANCE MARSEILLE MUCEM *Until 18 July. Mon, Wed-Sun 10-8.* Tracing the real and imaginary wanderings of peripatetic poet Jean Genet. *Until 29 Aug*, Picasso's relationship with pop culture: bullfighting, toys, music, the circus.

TURKEY ISTANBUL DIRIMART *Until 30 July. Mon-Sat 10-7, Sun 12-7.* The city's booming art scene welcomes its latest (and largest) commercial gallery, which opens with a group show of Turkish and international artists.

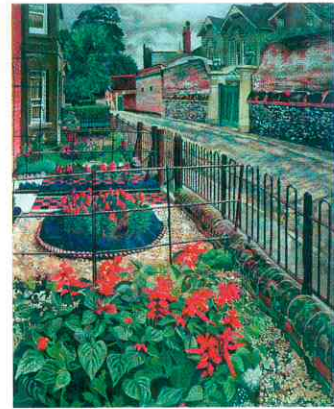
PERA MUSEUM *Until 14 Aug. Tues-Sat 10-7, Sun 12-6.* The V&A's Jameel Prize, for art and design inspired by Islamic traditions, opens at an external venue for the first time.

USA LONG ISLAND CITY NOGUCHI MUSEUM *Until 24 July. Wed, Thurs, Fri 10-5, Sat, Sun 11-6.* Tom Sachs's hilarious installation sends up the tea ceremony.

NEW YORK GUGGENHEIM MUSEUM *Until 7 Sept. Mon-Wed, Fri, Sun 10-5.45, Sat 10-7.45.* A 300-work Moholy-Nagy retrospective.

METROPOLITAN MUSEUM *Until 17 July. Mon-Thurs, Sun 10-5.30, Fri, Sat 10-9.* Sculpture, glass, gems and other treasures of the Hellenistic kingdoms, 323-30BC ■

1 Number one fan – Duncan Grant design on silk for Omega Workshops, c1913, in Bath. 2 Salvia corps – Stanley Spencer, *Gardens in the Pound*, 1936, in Cookham. 3 Floating vote – Claude Monet, *The Studio Boat*, 1874, in Edinburgh. 4 Nice bit of Staffs – decorative mount for a sword hilt, in Leeds.



4



5



6

5 Losing face – Maria Lassnig, *Head*, 1956, in Liverpool. 6 Palm reader – László Moholy-Nagy, *Photogram*, 1926, in New York. 7 On the hoof – silver rhyton in the form of a centaur, Greek, Seleucid, c160bc, in New York